

## Taming the Interactive SAS® Environment: Tips and Tricks for VIEWTABLE, The Enhanced Editor and More

Roger D. Muller, Ph.D., First Phase Consulting, Carmel, IN  
Joshua M. Horstman, M.S., First Phase Consulting, Indianapolis, IN

### Abstract

A craftsman is only as good as his tools. As SAS programmers, one of our most important tools is the interactive SAS environment itself. This paper describes a variety of methods to make the SAS environment work more effectively for you. We discuss ways to customize the environment and automate frequently-performed tasks. We describe how to fine-tune and utilize the enhanced editor. Finally, we reveal how to make SAS show you data the way you want to see it in VIEWTABLE, including changing the variable order, subsetting, exporting, sorting, hiding, and more. This paper serves as a basic tutorial for the new user, but even experienced SAS programmers may learn a new trick or two.

### 1 Introduction

The interactive SAS environment, often referred to as the SAS Windowing Environment, is one of the SAS programmer's most important tools. Far beyond a simple editor, the environment provides the programmer with a set of tools for developing SAS code, exploring and manipulating data, and examining various forms of output generated by SAS. It is highly customizable and includes a host of options and configuration settings that allow it to be adapted to various types of users doing different kinds of work.

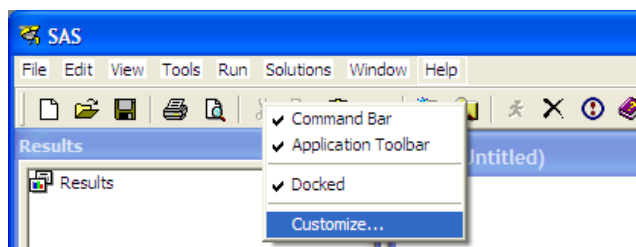
The default configuration may not be optimal for everyone. In this paper, we describe how you can use the environment more effectively and how you can customize it to improve your productivity. We begin with several high-level features of the SAS Windowing Environment and then drill down into both the Enhanced Editor and the VIEWTABLE facility.

### 2 Tips for Working in the SAS Windowing Environment

#### 2.1 Creating Custom Taskbar Buttons for Common Tasks

The SAS Windowing Environment includes a customizable toolbar. By adding custom buttons to this toolbar, common tasks can be made much more efficient. For example, it is very common that a user might wish to clear the log window and the output window before submitting a program for execution. A custom button allows these tasks to be performed with a single click.

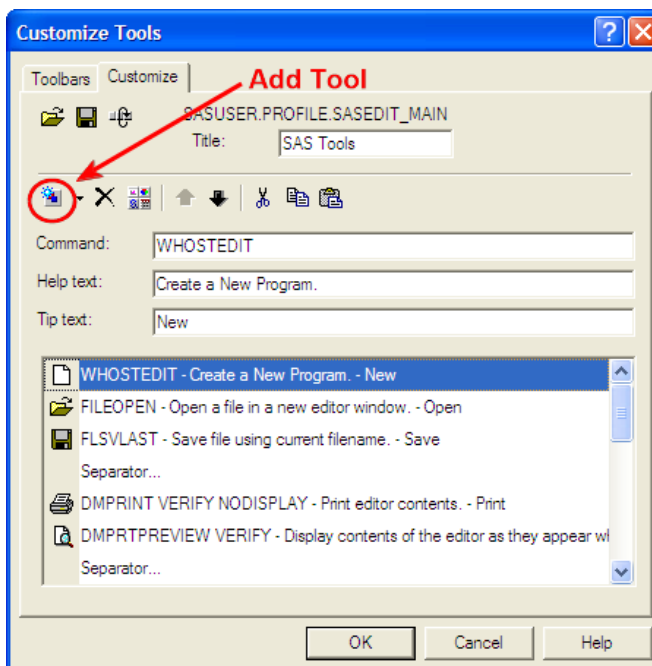
To create such a button, begin by right-clicking on the toolbar and choosing "Customize..." from the context menu that appears. This will open the "Customize Tools" dialog box (shown below at right). Select the "Customize" tab. This tab shows a list of the toolbar buttons and allows you to customize their appearance, arrangement, and the commands they execute. To add a new button to the list, click the "Add Tool" button (see figure) which looks like a gray rectangle with a blue star. This will add a new entry to the list below.



You can now add a Command, Help text, and Tip text to the new button by filling in the appropriate text boxes. For our button, we specified the command "lst; clear; log; clear; wpgm;". This is actually a concatenation of five commands which switches to the output window, clears it, switches to the log window, clears it, and then returns to the enhanced editor.

The Help text specifies the text that will appear in the status bar at the bottom of the SAS Windowing Environment when a user hovers the mouse pointer over the new toolbar button. The Tip text specifies the text that will appear in small pop-up over the button itself when the user hovers over the new button. We specified "Clear log and output" for both of these.

Next, you can customize the appearance of your button by selecting an icon. Your tool will not appear on the toolbar without an icon. Click the "Change icon" button which appears on the same row of buttons as the "Add tool" button did. This will present you with hundreds of icons from which to select.



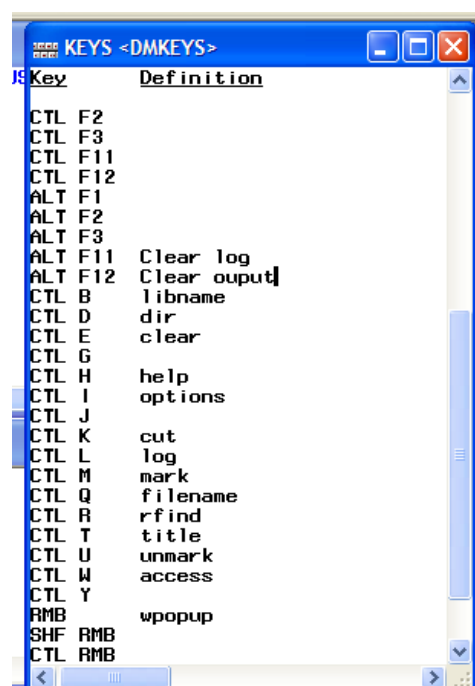
Finally, you can adjust the position of your new button on the toolbar by using the up and down arrows to move it up and down the list.

Using this technique, you can create a variety of custom buttons to automate that tasks you perform often. To learn more about the specific commands available for your use, consult the SAS documentation that is specific to your operating system. For example, the commands available in SAS running on Microsoft Windows are detailed in Chapter 17 of the SAS 9.3 Companion for Windows (see recommended reading list at end of paper).

## 2.2 Using and Creating Keyboard Shortcuts

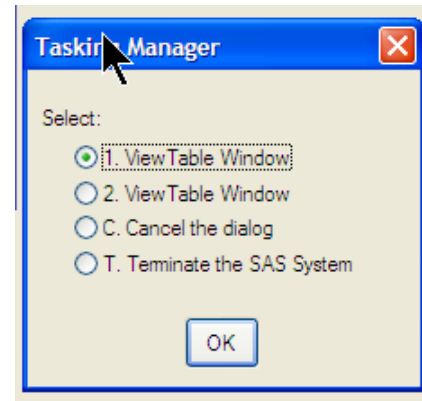
The SAS Windowing Environment comes preconfigured with a variety of useful keyboard shortcuts. To view a list of the current shortcut assignments, simply press the F9 key or issue the "keys" command on the SAS command line. For example, that the F8 key can be used to submit the current program, the F6 key can be used to switch to the log window, and the F7 key can be used to switch to the output window.

Keyboard shortcuts can be modified or added by editing their definitions right from within this same window. There are numerous SAS commands available for use in keyboard shortcuts. As was described previously with respect to custom toolbar buttons, the available commands are specific to the operating system on which SAS is executing and are detailed in the operating-specific SAS documentation.



### 2.3 Stopping SAS Code Execution

There are times when something goes wrong during the execution of a SAS program and the SAS session appears unresponsive. This could be caused by an infinite loop, a lack of convergence in a statistical procedure, problems with connections to external data, or other irregularities. Fortunately, a graceful recovery can usually be accomplished by hitting the Control and Break keys together. This will present a dialog box (shown at right) with several options which will allow you to regain control of your SAS session. Should these options fail, you may have to resort to using other methods provided within your specific operating system for terminating processes (Control-Alt-Delete on Microsoft Windows).

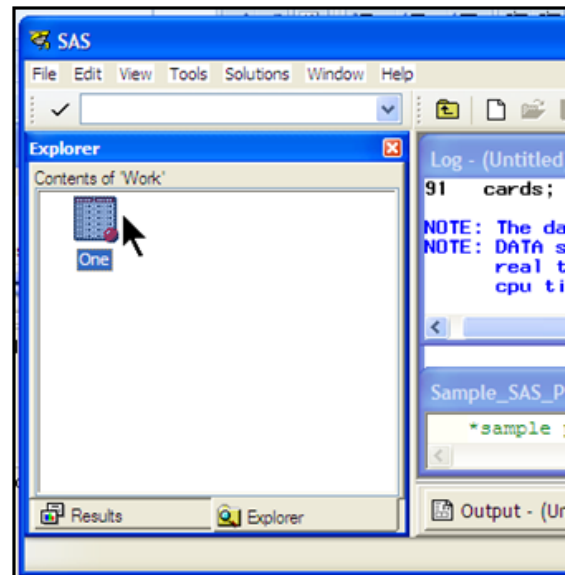


### 2.4 Getting Help

Help can be obtained in several ways: (a) use the F1 key, (b) use the Help menu pull down on the menu bar, or (c) enter commands in the command window. Syntax help is frequently needed when coding SAS procedures. To get help on procedure syntax, simply type the procedure name after the word help in the command window. Do not include the word "proc" or "procedure". For example, to obtaining syntax help on PROC MEANS, enter the command "help means" and press the Enter key. See Muller and Horstman (2010) for a more thorough discussion on utilizing the help available within the SAS environment as well as other help resources available externally.

## 3 Tips for Working with VIEWTABLE

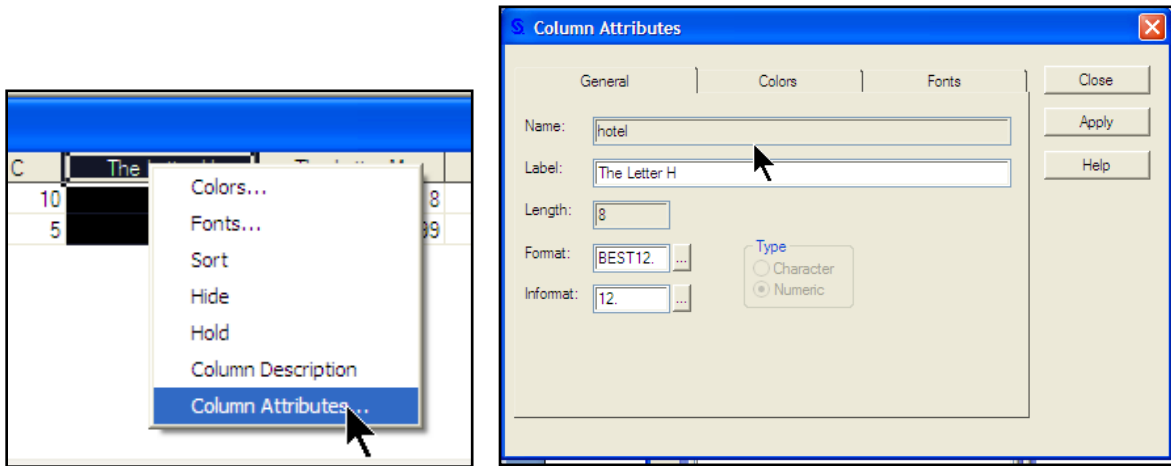
The VIEWTABLE facility is a tool for viewing and editing SAS datasets within the SAS Windowing Environment. By default, when you double-click on a SAS dataset in the Explorer window (shown at right), the dataset is opened in VIEWTABLE (shown below). This should not be confused with the SAS System Viewer, which is a separate, stand-alone application that is not part of the SAS Windowing Environment. While VIEWTABLE is a somewhat limited tool, it does have some useful features that are worth exploring.



	The Letter A	The Letter Z	The Letter C	The Letter H	The Letter M	The Letter P	The Letter N
1	1	9	10	4	8	7	3
2	104	702	5	77	99	456	44

### 3.1 View a Variable's Attributes

Once a dataset has been opened in VIEWTABLE, you can easily view the attributes of a given variable by right-clicking on the header of the column corresponding to that variable. Select "Column Attributes..." from the context menu that appears. This will open the Column Attributes dialog box from which you can view the label, length, format, and other attributes of the variable. You can also modify several of these attributes, but the changes you make will not affect the underlying dataset permanently. They persist only within the current VIEWTABLE window.

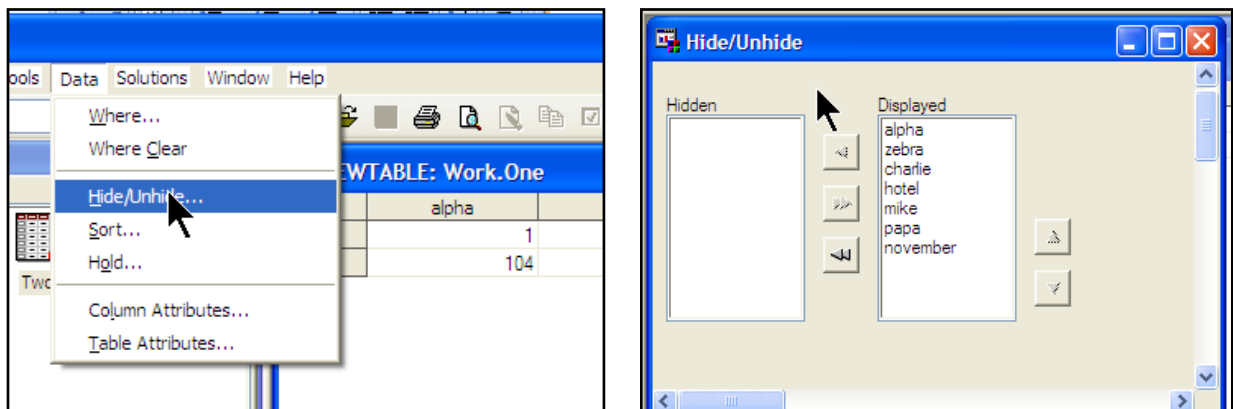


### 3.2 Rearranging and Hiding Columns

When you open a dataset in VIEWTABLE, the columns are displayed in the order they appear in the program data vector, which is part of the dataset itself. You cannot modify the program data vector in VIEWTABLE, but you can change which columns are shown and the order in which they appear.

One simple method for moving a column is to simply highlight the column, drag the column header, and drop it where you want it to be shown. You can hide a particular column by right-clicking on the column header and selecting "Hide" from the context menu that appears.

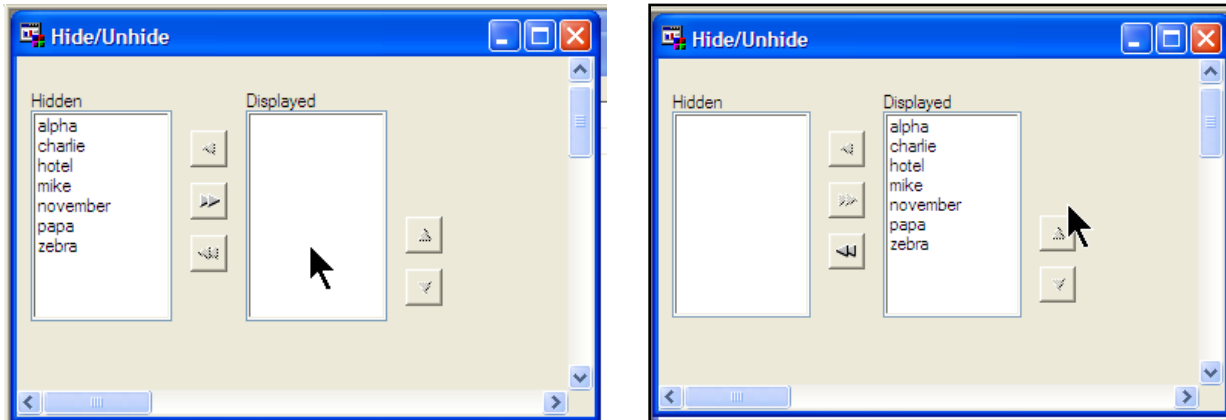
This method can become cumbersome if you wish to move or hide more than a few columns. In that case, it is often preferable to open the Hide/Unhide dialog box (shown below) by selecting "Hide/Unhide..." from the Data menu. Keep in mind that none of these changes will be permanent. They are lost once you close VIEWTABLE.



### 3.3 Rearranging column names to alphabetical order (left to right)

The Hide/Unhide dialog box provides an easy way to hide multiple columns and to rearrange them at will. It can also be used to arrange the columns in alphabetical order by name. This is particularly useful when dealing with a large and unfamiliar dataset.

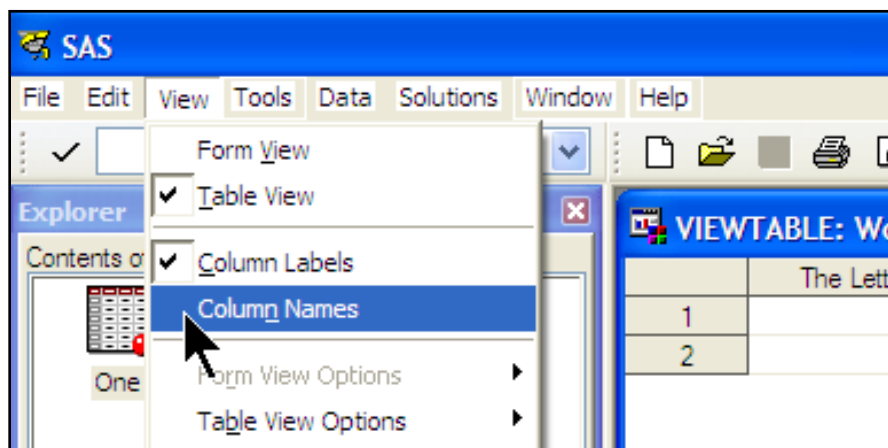
To perform this operation, first open the Hide/Unhide dialog box as described above. Next, press the << button to move all of the columns into the Hidden list (see below). When the columns are moved, they are also alphabetized. You can then use the >> button to return all of the columns to the Displayed list, and the alphabetical ordering will be preserved.



Again, these changes only persist while the dataset is open in VIEWTABLE. The underlying dataset is not affected. To permanently reorder the variables in a dataset requires programming and is commonly done with the RETAIN statement. If there are a large number of variables, a simple trick can be used to avoid having to type the name of each variable into the RETAIN statement. Simply export the SAS dataset as an Excel spreadsheet, being sure to specify the option to use the variable names as column headers. Then, rearrange the column headers as desired, copy them all to the clipboard, and paste them into your SAS code on the RETAIN statement.

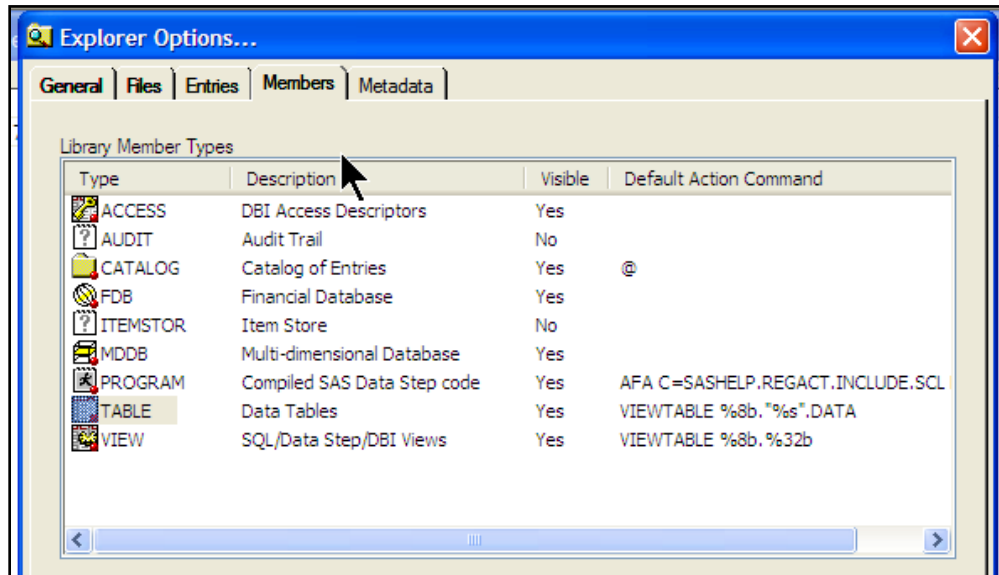
### 3.4 Displaying Variable Names vs. Variable Labels (and Making it Permanent!)

By default, when a dataset is opened in VIEWTABLE, the top of each column displays the variable label, not the variable name. There may be times when it is more useful to view the variable names. This can be accomplished by simply opening the "View" drop-down menu and selecting "Column Names" (shown below). Variable labels can be restored in a similar manner.

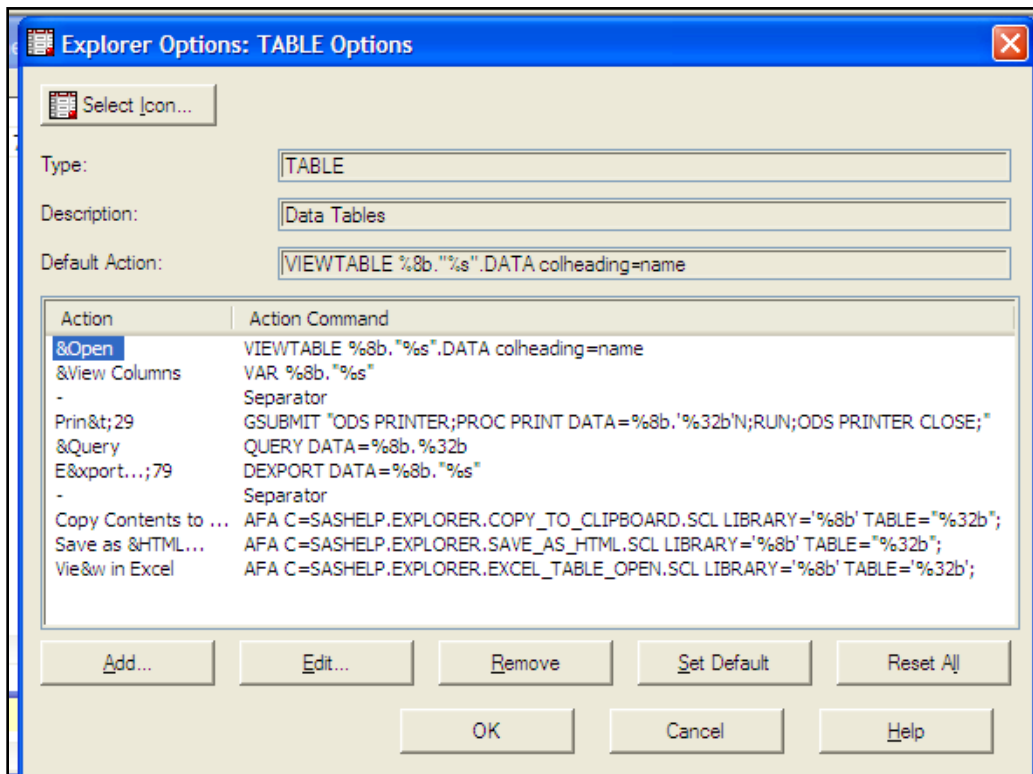


It is also possible to make this change permanent so that variable names will be shown by default when a dataset is first opened in VIEWTABLE. Note that this change will be saved as part of your SAS profile so that it becomes the default in this and future SAS sessions.

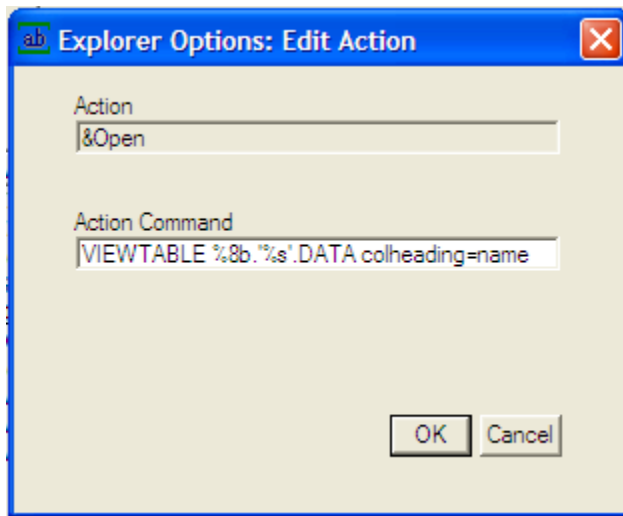
This change is hidden deeply within the layers of the SAS environment. First, switch to the Explorer window within the SAS Windowing Environment. Then, from the menu bar at the top, select Tools → Options → Explorer. This will open the Explorer Options dialog box. Select the “Members” tab (shown below).



From the list of Library Member Types, choose “TABLE” and then click the “Edit...” button. This opens the “Explorer Options: TABLE Options” dialog box.



It is necessary to modify the action command associated with the "&Open" action. Click on "&Open" in the Action column and click the "Edit..." button. This takes you to the "Explorer Options: Edit Action" dialog box.



From here, the Action Command can be edited. The default command is as follows:

```
VIEWTABLE %8b. '%s'.DATA
```

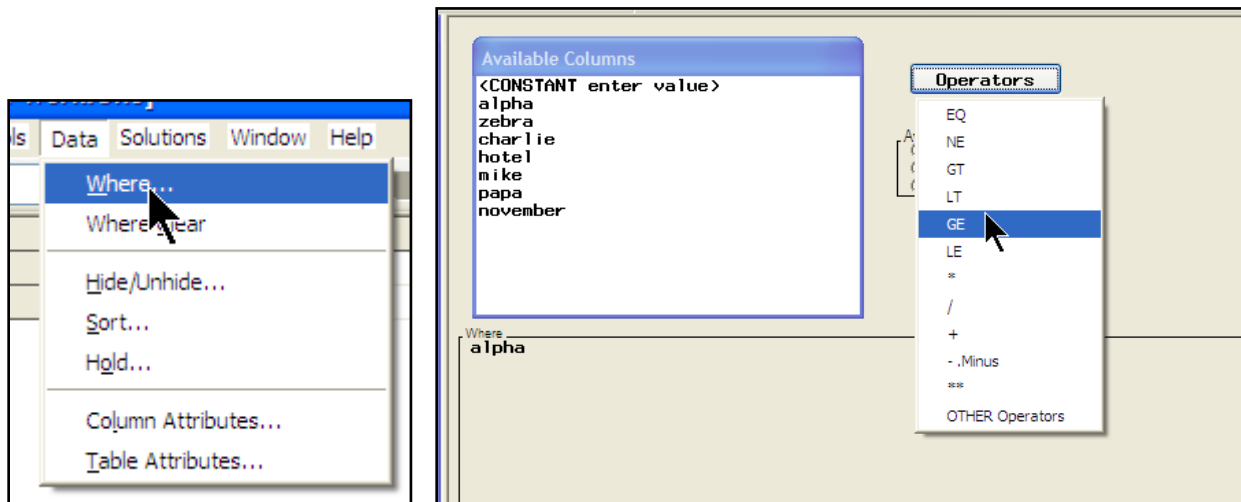
Change it to this:

```
VIEWTABLE %8b. '%s'.DATA colheading=name
```

You will then need to click OK three times to close the various dialog boxes. After making this change, VIEWTABLE will show variable names by default when you open a dataset, and you'll still have the option of toggling between names and labels as before.

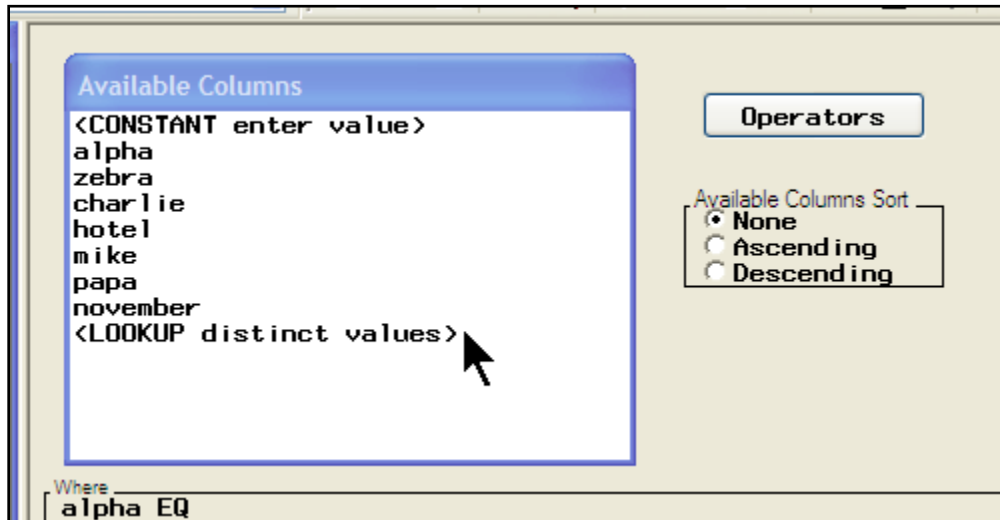
### 3.5 Subsetting the data.

VIEWTABLE provides a simple point-and-click interface for subsetting the data, etc. To access this facility, select "Where..." from the Data menu or from the context menu that appears when you right-click anywhere in VIEWTABLE that is not part of a data column. This will open a dialog box (shown below) that allows one to build simple queries using WHERE clause syntax.

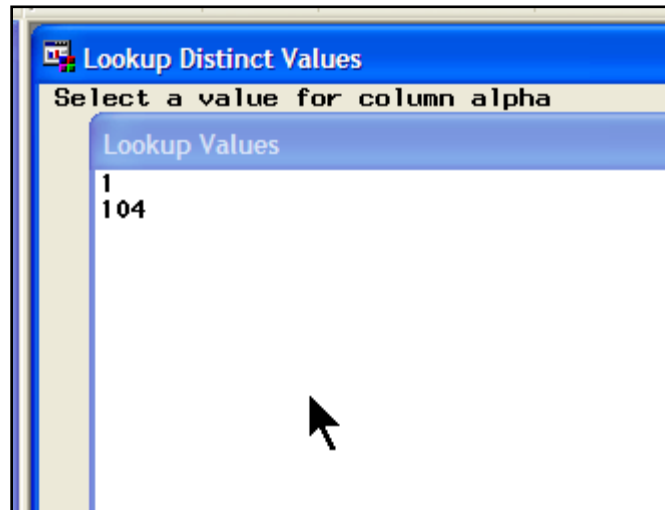


Notice that the WHERE clause is shown in the bottom portion of the window as it is being constructed.

A very nice feature of this tool is the ability to generate a list of distinct values of a particular variable. As an example, if we wanted to look up the values that are present for the variable alpha, we could select “LOOKUP distinct values”.



The screen that results from clicking on “<LOOKUP distinct values>” above is shown below:



### 3.6 Limitations to VIEWTABLE

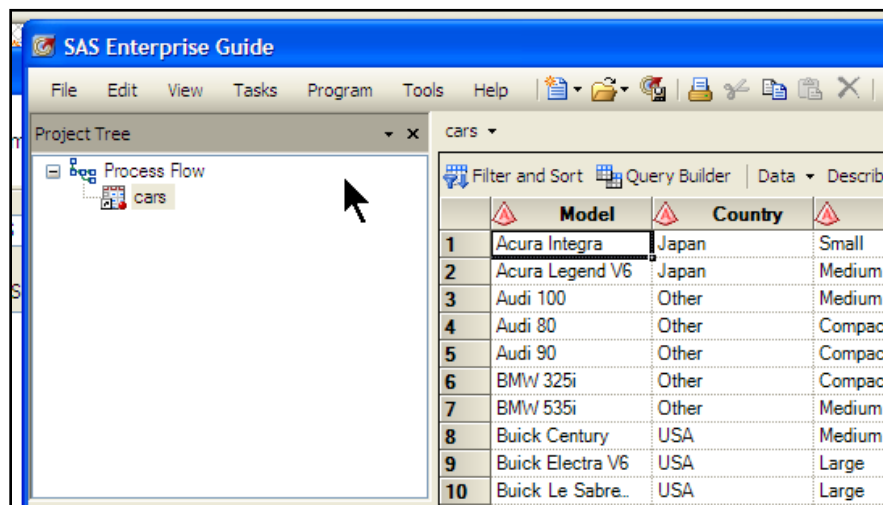
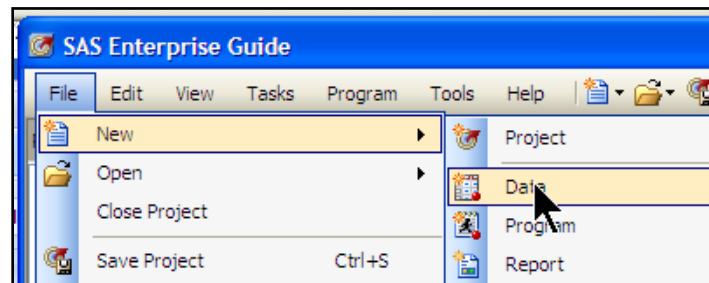
VIEWTABLE is a handy tool to get a quick “look and see” at some data when building code interactively. However, its utility is severely limited by the fact that there is no way to save any customizations made to the appearance of the dataset. If you look at a particular dataset frequently and like to always see the columns arranged in a certain way, you must perform these steps each time.



### 3.7 An alternative to VIEWTABLE: SAS Enterprise Guide

The function of VIEWTABLE has been completely superseded by SAS Enterprise Guide in the Microsoft Windows Environment. Programmers using Microsoft Windows should be encouraged to move on to SAS Enterprise Guide. SAS Enterprise Guide is a separate application installed by default when PC SAS version 9 for Windows is installed.

While a full exploration of SAS Enterprise Guide is beyond the scope of this paper, its advantages are many: the ability to make simple or sophisticated queries and sorts; the ability save the code from these queries and sorts so that they may be reused at a later time; a rich programming environment in which comments and notes are easily stored; the ability to bring in and run other SAS programs; complete access to the SAS editors for writing code; controlled execution of branches of code; easier use of macros; and all of this and more can be saved in one file. A few screen shots are shown below to whet your appetite.



## 4 Working with the Enhanced Editor

The SAS Windowing Environment includes two different editors that can be used for developing SAS code: the Program Editor, and the Enhanced Editor. The Enhanced Editor was added in SAS version 8 and includes a variety of nice features such as automatic color-coding of your code, automatic indentation, and collapsible sections to make it easier to view the high-level flow of a program file. There are some additional features that are worth a more detailed look: abbreviations, keyboard macros, and custom color schemes.

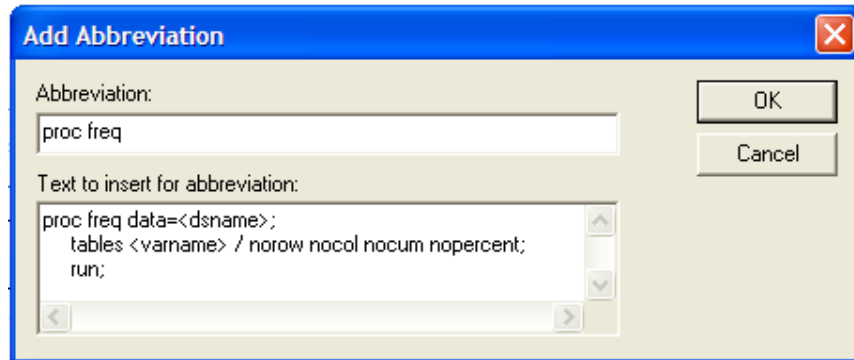
### 4.1 SAS Abbreviations

One great feature of the Enhanced Editor is the ability to define abbreviations. An abbreviation is a user-defined string that the editor will automatically replace with the pre-defined text of your choice. This is an extremely useful way to create your own code templates for pieces of syntax that are difficult to remember or cumbersome to type.

For example, if you use PROC FREQ often, you could create an abbreviation called "proc freq" and assign it some text that constitutes a typical call you might make to PROC FREQ, including the options you normally use:

```
proc freq data=<dsname>;  
  tables <varname> / norow nocol nocum nopercnt;  
run;
```

To create this abbreviation, make sure you are in the Enhanced Editor window and select “Add Abbreviation...” from the Tools menu. This will open the Add Abbreviation dialog box. Enter the name of the new abbreviation you wish to create and the text it should insert.



Press the OK button and you’ve created your abbreviation. To use your abbreviation, simply type the text “proc freq” in the Enhanced Editor. The editor will prompt you to see if you want to insert the replacement text. If you press Enter or Tab, the replacement text will be inserted. If you don’t wish to use the abbreviation at that time, just keep typing. To modify or delete your abbreviations, go to Tools → Keyboard Macros → Macros. This will open the Keyboard Macros dialog box. This dialog will also allow you to assign keyboard shortcuts to your abbreviations. For a more thorough discussion of abbreviations, refer to Ceranowski (2008) and Carpenter (2003).

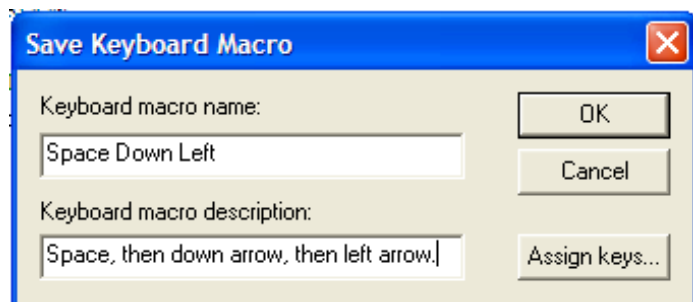
## 4.2 Keyboard Macros

SAS abbreviations are really just a special type of keyboard macro. Keyboard macros can be used to store any sequence of keystrokes and play them back on demand. By assigning a keyboard shortcut to a keyboard macro, you can dramatically reduce the need to perform repetitious and cumbersome sequences of keystrokes.

For example, if you needed to insert a space at the beginning of each line of a lengthy code file, the traditional method would be press the space, down arrow, and left arrow keys, in that order, over and over repeatedly until the bottom of the file is reached. To avoid this drudgery, simply assign those three keystrokes to a keyboard macro and then assign a shortcut to the macro. The entire file could then be processed by simply holding down the corresponding keyboard shortcut.

To start recording the keyboard macro, make sure you are in the Enhanced Editor and then select Tools → Keyboard Macros → Record New Macro. Recording will begin immediately, so proceed with the keystrokes you wish to record. When you are finished, select Tools → Keyboard Macros → Stop Recording. This will open the Save Keyboard Macro dialog. You can assign a name and provide a description.

If you wish to assign a key, press the “Assign keys...” button, which will take you to the Assign Keys dialog box where you can assign a keyboard shortcut. If you wish to edit or delete your keyboard macro, select Tools → Keyboard Macros → Macros to open the Keyboard Macros dialog box. For more information on keyboard shortcuts, refer to Lund (2009) and Carpenter (2003).

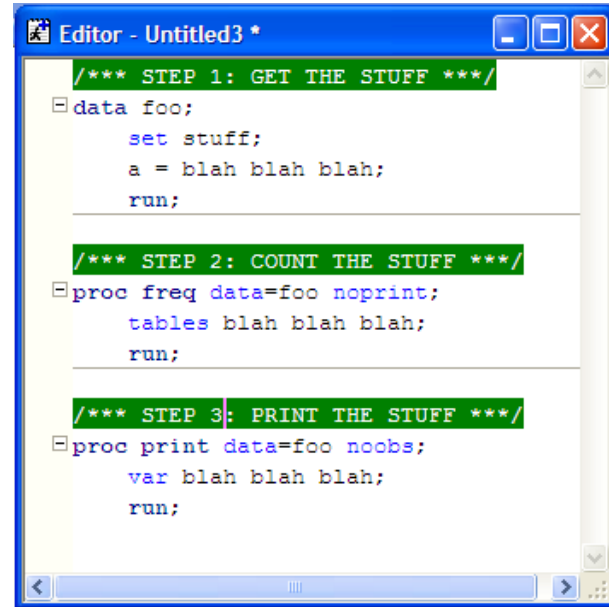


### 4.3 Custom Color Schemes

One nice feature of the SAS Enhanced Editor is that it automatically color-codes certain elements within a SAS program. This can make the code file easier to read and understand. For example, in the default color scheme, SAS keywords are colored blue, quoted text is colored purple, and comments are colored green, among other things.

The Enhanced Editor also gives you the ability to modify this color scheme on an element-by-element basis. This can be a very powerful way to improve the readability of your code. Notice how the custom color scheme shown to the right really makes the comments stand out and helps the reader see the structure of the code at a glance.

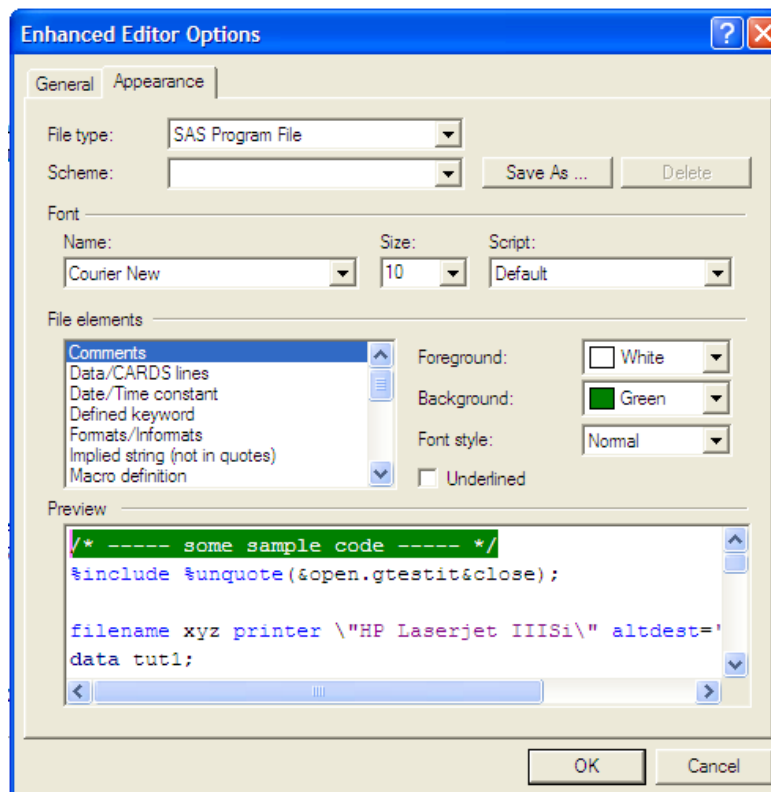
To modify the color scheme, switch to the Enhanced Editor window and select Tools → Options → Enhanced Editor. This will open the Enhanced Editor Options dialog box. Select the “Appearance” tab as shown below:



```
Editor - Untitled3 *
/** STEP 1: GET THE STUFF ***/
data foo;
  set stuff;
  a = blah blah blah;
run;

/** STEP 2: COUNT THE STUFF ***/
proc freq data=foo noprint;
  tables blah blah blah;
run;

/** STEP 3: PRINT THE STUFF ***/
proc print data=foo noobs;
  var blah blah blah;
run;
```



### 4.4 One Last Tip: Selecting Columns of Text

In the Enhanced Editor, you can select a column of text without selecting the entirety of each line. Simply hold down the ALT key and the left mouse button while dragging the mouse to highlight the desired column of text. Try it!

## 5 Conclusion

In today's world, all of us have too much to do and not enough time to do it. We cannot afford to continue working in inefficient ways. It is necessary that we hone our programming tools to maximize our productivity. In this paper, we've shared a laundry list of assorted tips and tricks that should help the SAS programmer maximize the use of the tools available in the interactive SAS environment.

## 6 Recommended Reading

Carpenter, Art. "Creating Display Manager Abbreviations and Keyboard Macros for the Enhanced Editor." SUGI 28 Proceedings, 2003, Paper 108-28. <http://www2.sas.com/proceedings/sugi28/108-28.pdf>

Ceranowski, Elizabeth. "SAS Abbreviations are your friends, use the template method to code!" Pharmaceutical SAS Users Group 2008 Conference Proceedings, Paper SA07. <http://www.lexjansen.com/pharmasug/2008/sas/sa07.pdf>

Chakravarthy, Venky. "The VIEWTABLE Window - A Useful but Underappreciated Tool." SUGI 31 Proceedings, 2006, Paper 255-31. <http://www2.sas.com/proceedings/sugi31/255-31.pdf>

Lund, Pete. "Remembering the Past: Using SAS® Keyboard Macros to Enhance Documentation." Pacific Northwest SAS Users Group 2009 Proceedings. <http://www.lexjansen.com/pnwsug/2009/Lund.%20Pete%20-%20Remembering%20the%20Past.pdf>

Muller, Roger D. and Joshua M. Horstman. "Custom Google Searches, PDF Sticky Notes, and Other Tips for Organizing and Accessing SAS® Help Resources." MidWest SAS Users Group 2010 Conference Proceedings, Paper 120-2010. <http://www.mwsug.org/proceedings/2010/resources/MWSUG-2010-120.pdf>

Muller, Roger D. "Optimizing SAS® Version 8 in a Windows Environment – from the User Interface to Automated Document Production." SUGI 27 Proceedings, 2002, Paper 24-27. <http://www2.sas.com/proceedings/sugi27/p024-27.pdf>

SAS Institute. "SAS® 9.3 Companion for Windows," 2011. <http://support.sas.com/documentation/cdl/en/hostwin/63047/PDF/default/hostwin.pdf>

SAS Institute, Product Documentation – SAS Enterprise Guide. <http://support.sas.com/documentation/onlinedoc/guide/>

## 7 Contact Information

Your comments and questions are valued and encouraged. Contact the authors at:

Roger D. Muller  
First Phase Consulting, Inc.  
317-846-5782  
rdmuller@hotmail.com

Joshua M. Horstman  
First Phase Consulting, Inc.  
317-815-5899  
jmhorstman@gmail.com

SAS and all other SAS Institute Inc. product or service names are registered trademarks or trademarks of SAS Institute Inc. in the USA and other countries. ® indicates USA registration. Other brand and product names are trademarks of their respective companies.