



Author Submission Guidelines

Table of Contents

1. Introduction	3
1.1 Important Conference Dates	3
1.2 Summary Checklist	3
1.3 Required Paper Attributes	4
1.4. Abstract Submission Website	4
2. Copyright Grant Form	4
3. Paper Details	5
3.1 Paper Tips.....	5
3.2 Paper Examples.....	5
3.3 Page Limits	5
3.4 Capitalization, Terminology, Code, References	5
3.4.1 Capitalization	5
3.4.2 Terminology	6
3.4.3 SAS Code	6
3.4.4 References	6
3.5 Formatting Requirements.....	7
3.5.1 Paper Number and Title.....	7
3.5.2 Use of the Paper Template	7
4. Final Paper PDFs.....	8
4.1 PDF Creation	8
4.1.1 Document Properties and Embedded Fonts.....	8
4.1.2 Bookmarks and Passwords	9
4.1.3 PDF File Creation.....	10
4.2 Checklist for Final PDF File	10
4.3 Supporting Materials.....	10
4.4 Posting your Paper to sasCommunity.org.....	10
5. Presentation Details.....	11
5.1 Room Setup Details.....	11
5.2 Slide Counts.....	11
5.3 Tips for Preparing your Presentation	11
5.4 Presentation Examples.....	11
5.5 Practicing your Presentation Tips	11
5.6 Presentation Requirements	12
5.7 Delivering your Presentation	12
6. Electronic Poster Details	13
6.1 e-Poster Guidelines	13
6.2 e-Poster Tips.....	13
6.3 e-Poster Requirements	14
6.4 Kiosk Mode.....	14
6.5 Final e-Poster Submission	14

1. Introduction

Congratulations on your abstract acceptance to the Mid-West SAS User Group (MWSUG) conference. This document provides submission guidelines and resources for contributed and invited authors. Accepted papers from the SAS Institute have different requirements.

Use this resource to format your manuscript, incorporate style and reference important details for the Copyright Grant Form, final paper, slides and electronic posters (e-Posters). Though the style guidelines can be used as recommendations, [Section 1.2](#) provides a list of paper attributes that must be followed, and will be reviewed by your Section Chair, as these attributes are part of the integrity and consistency of the *MWSUG Proceedings*.

Many people within MWSUG are available to assist you with your manuscript and slide preparation, including Section Chairs, Mentors and peers. Send them a copy of your draft so they can help you get the most out of your experience.

1.1 Important Conference Dates

Below is a list of important dates that each presenter must adhere to. These dates can also be found on the conference website: <http://www.mwsug.org/2017/dates.html>

Event	Date
Call for Papers (8 weeks) <ul style="list-style-type: none">• Opens• Closes	<ul style="list-style-type: none">• March 10, 2017• May 5, 2017
Abstract Decisions (3 weeks) <ul style="list-style-type: none">• Begin review• Authors notified of abstract acceptance	<ul style="list-style-type: none">• May 6, 2017• May 30, 2017
Presenters Registration <ul style="list-style-type: none">• Registration opens• Early bird registration closes	<ul style="list-style-type: none">• June 12, 2017• September 1, 2017
Author Submissions <ul style="list-style-type: none">• Copyright Grant Form due• Final papers due (in pdf)• Presenter biographies due• Final e-posters due• Final presentations due	<ul style="list-style-type: none">• August 25, 2017• August 25, 2017• August 25, 2017• September 29, 2017• September 29, 2017
Conference <ul style="list-style-type: none">• Opening Session• Closing Session	<ul style="list-style-type: none">• October 8, 2017• October 10, 2017

1.2 Summary Checklist

After reading this Submission Guideline document, use this checklist to remember important details. Please don't use it as a substitute for reading the full document.

1. Profile and biography information in the Abstract Submission Website is complete
 - a. Select "Profiles" within the Abstract Submission Website to view
2. Review guidelines for paper content, including:
 - a. Use the templates
 - b. Stay within page limits
 - c. Use the tips ([Section 3.1](#))
 - d. Review paper to ensure it complies with requirements.

3. Upload to the Abstract Submission Website by the deadline indicated in the list of important conference dates found in [Section 1.1](#):
 - a. Signed Copyright Grant Form
 - b. Final paper in portable document format (PDF).
4. Review guidelines for presentation or e-Poster content, including:
 - a. Use the template
 - b. Stay within Slide Counts
 - c. Review presentation or e-Poster to ensure it complies with the requirements.
 - d. Standard presentation room setup ([Section 5.1](#)).
5. Upload to the Abstract Submission Website the final presentation by the deadline indicated in the list of important conference dates found in [Section 1.1](#), for pre-loading to the section laptop.
6. (Optional) Post your paper and supporting materials on sasCommunity.org.
7. Practice delivery of your presentation or e-Poster
8. Bring a backup copy of your presentation or e-Poster to the conference on a USB drive.

1.3 Required Paper Attributes

All papers will reviewed by the Section Chairs, Publications Coordinator and Webmaster for the required attributes. Many of these attributes are part of the paper template. Papers without these attributes will be returned to the author for compliance. Further guidance on these attributes follows in [Section 3](#) :

1. Paper number is included above the title ([Section 3.5.1](#)).
2. Paper number is exactly as assigned.
3. Title is centered and properly capitalized ([Section 3.5.1](#)) and appears exactly as written on the Copyright Grant Form.
4. Author and affiliation is beneath the title and is separated by a comma. Multiple authors are separated by semicolons, as described in [Section 3.5.2](#), Item 2.c.
5. The paper is professionally written and formatted as a final paper; draft papers not allowed.
6. Appropriate trademark symbols (® or ™) appear after the first reference to a SAS product in paper ([Section 3.5.2](#), Item 4).
7. The SAS Trademark Citation is included on the final page of the paper ([Section 3.5.2](#), Item 5).
8. Final paper must be in PDF format with the appropriate properties ([Section 4.1.1](#)).

1.4. Abstract Submission Website

Though the word “Abstract” is in the name, the “Abstract Submission Website” is used to submit all your important documents to the conference, such as the Copyright Grant Form, Final Paper in PDF, Slides and e-Posters: <https://www.softconf.com/g/mwsug2017/>

2. Copyright Grant Form

1. The Copyright Grant agreement gives MWSUG a non-exclusive right to publish your paper in the conference Proceedings and to reproduce your paper in sales and marketing literature.
2. Please ensure the paper title appears on the Copyright Grant Form exactly as it appears on the abstract and final paper. In the event of discrepancies between title wordings, the Copyright Grant Form title will take precedence.

3. Signing the Copyright Grant Form agreement confirms your approval to attend the conference and present your accepted paper. If you will not be able to attend the conference as scheduled, please notify your Section Chair immediately. If you have arranged for someone else to present your paper, provide the name of your substitute to the Section Chair at that time.
4. Upload the Copyright Grant Form to the Abstract Submission Website or mail it to the address printed on the Copyright Grant Form.
5. Signed Copyright Grant Forms are due by the deadline indicated in the list of important conference dates found in [Section 1.1](#).

3. Paper Details

Final papers should use proper style, capitalization, terminology, formatting, and scope. Refer to the MWSUG 2017 Sample Paper as a guide on the proper use of these concepts.

3.1 Paper Tips

If you are solving a common problem, focus on your solution and the results of your experience. Emphasize how your techniques can be used by others for similar applications. If you are presenting a novel solution, focus on what makes your solution unique from past solutions, and why others should consider your solution. Authors are strongly suggested to conduct a literature review to provide examples or references to prior authors who may have solved a similar problem.

Post supplemental information online, such as source code, macros, and results that will not fit in your paper. One suggestion is to post to sasCommunity.org ([Section 4.4](#)).

3.2 Paper Examples

For good examples of papers, check out last year's "Best Contributed Paper" awards (<http://www.mwsug.org/2016/bestpapers.html>) or contact the Paper Mentorship/Speaker Training Coordinator at Mentoring@mwsug.org for paper examples.

3.3 Page Limits

The recommended page limit for manuscripts in the *MWSUG Proceedings* is 20 pages. Supplemental materials can be posted to sasCommunity.org ([Section 4.4](#)). Contact your Section Chair with any questions.

3.4 Capitalization, Terminology, Code, References

3.4.1 Capitalization

Use the following SAS conventions for capitalization:

1. In a Data step, DATA is always all uppercase when you are referring to the DATA step. However, you will likely see papers with lowercase code even from the SAS Institute.
2. When referencing SAS code in the text, use all caps for names of procedures, statements, options, functions, command and steps. At the first mention of a procedure, its name followed by the word "procedure" should be used (e.g., "the PRINT procedure"). Any subsequent reference to the procedure in the text can use the SAS code notation (e.g., "PROC PRINT").

3.4.2 Terminology

Use the following conventions for terminology:

1. Use complete names when referring to trademarked product names, for example, use “Enterprise Guide” instead of “SAS EG” or “EG”. For a list of SAS product names, see <http://www.sas.com/presscenter/trademarklist.html>).
2. Write “data set” as two words, but “database” as one word.
3. Refer to the following: <http://support.sas.com/events/sasglobalforum/vocabulary.pdf>, for a list of commonly used terms and phrases that will help make your text more easily translatable and understood by an international audience.

3.4.3 SAS Code

Do not bury SAS code in body of the text. Set it off from the text as shown in the paper template ([Section 3.5.2](#)).

3.4.4 References

1. All published work that is cited in your paper must be listed in the **References** section.
2. Use of Copyrighted Material:
 - a. If you include text or visuals that were written or developed by someone other than yourself, you must cite the sources.
 - b. If you use copyrighted material, you must mention that you have permission from the copyright holder or the publisher.
 - c. The copyright holder or publisher might also require you to include a copyright notice. For example: Reprinted with permission of SAS Institute Inc. from *SAS® Risk Dimensions: Examples and Exercises*. Copyright 2004. SAS Institute Inc.
 - d. To cite portions of SAS Institute documentation, you must receive permission from SAS. Complete the Request for Permission to Use Copyrighted Materials at http://www.sas.com/contact/permission_form.html.
3. Use of Non-Copyrighted Material
 - a. If you use information from a previously printed source that is not copyrighted, cite the source in parenthesis after the text. For example: “The minimum variance method defines the distance between clusters (Ward 1984, p.23).”
 - b. The reference format for sources published in hard copy: Author(s). Date of publication or last revision. *Title of Reference*. City, State of publisher: Name of publisher.
 - c. The reference format for sources published on the Web: Author. "Title of Document" Title of Complete Work. <Web address> any additional directions for retrieving source (access date).

3.5 Formatting Requirements

Manuscripts meeting the formatting requirements below will be published in the *MWSUG Proceedings*.

3.5.1 Paper Number and Title

On the first page, **use the paper number and exact title from the Copyright Grant Form**. The paper number is assigned by the Section Chair and is different from the original abstract submission number. Please note that paper titles may be edited to ensure the correct use of trademarks ([Section 3.5.2](#), Item 4) so please check for this and use the edited title provided.

3.5.2 Use of the Paper Template

It is strongly recommended that you use the provided paper template. The template is available in the Presenter Resource on the MWSUG 2017 website, <http://www.mwsug.org/2017/resources.html>, and contains all the sections needed in your paper, suggested fonts and type sizes for the headers and text in the body of the paper.

You can save yourself much work by using the paper template, it already incorporates most of the formatting that you need. However, if you do not use the template, please ensure your paper conforms to the following guidelines:

1. All **margins** should be 1 inch.
2. On the **first page**:
 - a. Center the number of the paper about 1 inch from the top of the page,
 - b. Center the title about ¼ of an inch under the number of the paper,
 - c. Center the names of the author(s) and the company affiliation(s) under the title and
 - d. Begin the text about a ½ of an inch down from the name of the last author.
3. On all **following pages** center page numbers about 3/8 of an inch from the bottom of the page.
4. **Trademarks**:
 - a. Insert the appropriate trademark symbols (® or ™) for SAS products only. A list of SAS products and their appropriate symbol can be found at the URL listed below <http://www.sas.com/presscenter/trademarklist.html>.
 - b. Trademarks owned by companies other than SAS are covered by a generic reference in the citation at the end of the paper. If your word processor or font does not include the registered trademark symbol (®) or the trademark symbol (™), it is okay for you to use only the Trademark Citation at the end of your paper.
 - c. Use the appropriate trademark symbol the first time you mention a SAS trademarked product in your paper and in each slide. Subsequent references to the same product do not receive trademark symbols in papers. If a trademark appears in the title, this counts as the first appearance.
5. **Final page**: must contain the following Trademark Citation:

SAS and all other SAS Institute Inc. product or service names are registered trademarks or trademarks of SAS Institute Inc. in the USA and other countries. ® indicates USA registration. Other brand and product names are registered trademarks or trademarks of their respective companies.

6. **Body text** should be:
 - a. Single-spaced
 - b. Consistent in size with the font sizes in the template. The font sizes in the paper template are summarized in the table below.
 - c. If readable and professional, body text can be in a different font face.

	Element	Font	Case	Size
1	Paper Number	Arial Bold	Proper Case	10
2	Title	Arial Bold	Proper Case	13
3	Author(s) Name and Affiliation	Arial	Proper Case	11
4	Header 1 (e.g., Abstract)	Arial Bold	Heading 1 Style or UPPER CASE	11
5	Header 2 (e.g., sub-header)	Arial Bold	Heading 2 Style or UPPER CASE	10
6	Body	Arial	Sentence case	10
7	SAS Code	Courier New	lower case	10

4. Final Paper PDFs

Final papers must be uploaded to the Abstract Submission Website listed in [Section 1.4](#) by the deadline indicated in the list of important conference dates found in [Section 1.1](#).

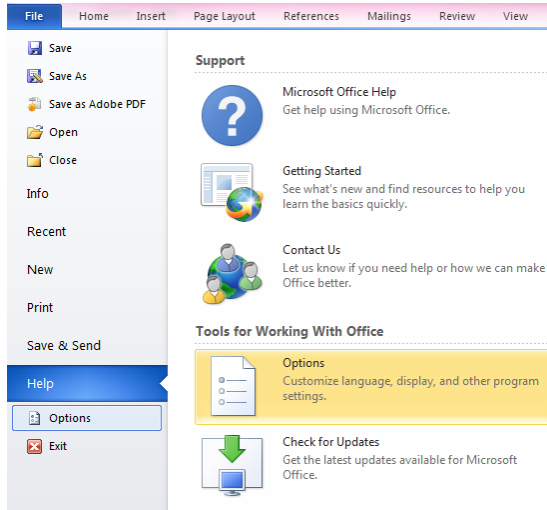
4.1 PDF Creation

4.1.1 Document Properties and Embedded Fonts

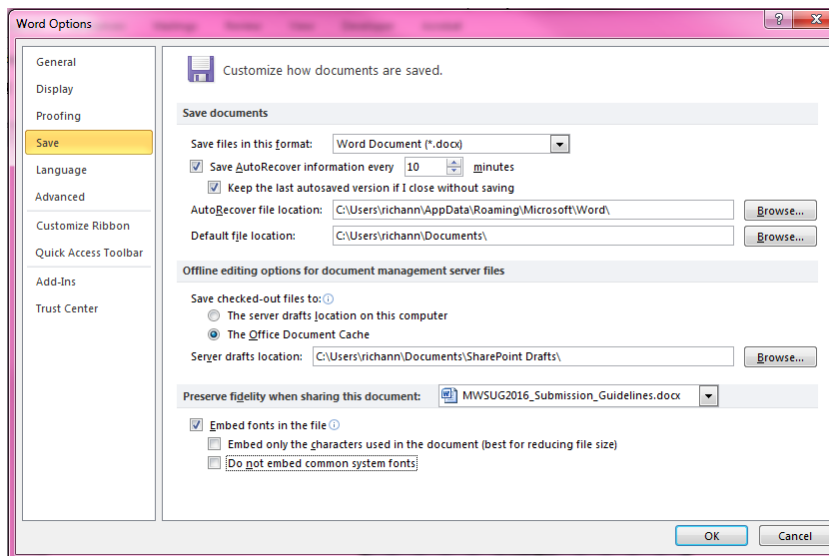
When creating your final PDF file, it is **required** that you place the title, keywords and first author in the corresponding sections of the **Document Properties**. Please fill in the subject field of the **Document Properties** with the following: **SSnn - MWSUG 2017**, where SSnn is your paper number. “SS” corresponds to the two character section code and “nn” corresponds to the number assigned by the Section Chair. This is **not** the number assigned by the Abstract Submission System. Note: if you have already done this in Microsoft Word, the information may not be carried through into the resulting PDF. **You may need to re-enter it.**

Exactly how you embed fonts will vary from application to application and version to version. These instructions will vary depending on the version of Microsoft Word. Below are the instructions for Microsoft Word 2010:

1. Navigate to the Word Options menu (File → Help → Options)



2. Within the Word Options menu, navigate to the Save options
3. Make sure the check box for 'Embed fonts in the file' is checked and that the check box for 'Do not embed common system fonts' is unchecked.



4. Click OK to save the new options.
5. RE-SAVE THE DOCUMENT AS A WORD DOCUMENT.
6. Once the document is re-saved with the fonts embedded, then it can be saved as a PDF.

4.1.2 Bookmarks and Passwords

There should not be any bookmarks in the PDF document. Nor should there be a password on the file.

4.1.3 PDF File Creation

Some versions of Microsoft Word have an option to save the document as PDF. If your version has the save as PDF option, you can save the file as a PDF after you have embedded the fonts and re-saved as a word document. If you are unable to create a PDF file, please contact your Section Chair.

4.2 Checklist for Final PDF File

Before uploading the PDF, make ensure:

1. The assigned paper number (not the abstract submission number) appears at the top of the paper.
2. The title matches the title on the Copyright Grant Form.
3. Nothing except the page number is within the 1" margins.
4. The page numbers are at the bottom of each page.
5. The file has been saved with the fonts embedded.

If you have any problems creating or uploading your PDF file, contact your Section Chair for assistance.

4.3 Supporting Materials

Handouts may be used if necessary, though it is preferred that supporting materials be posted online. Please refer to Posting your Paper to sasCommunity.org ([Section 4.4](#)) for more information. Handouts should be used for information such as example code, graphics, or other supporting material.

If you decide to print handouts, please adhere to the following guidelines:

1. Do not include price lists, support commitments, promotional data, or other information of a sales nature.
2. Include your name and contact information so that people can contact you if they have questions or want more information.
3. Do not rely on your supporting materials to take the place of good visuals or a well-prepared oral presentation.
4. Bring a minimum of 50 copies.
5. When you check in before your presentation, tell the Section Chair that you have a handout. The Section Chair will have one of the assigned Session Coordinators distribute the handouts as you begin your presentation.
6. Insert the appropriate trademark symbols (® or ™) and citations ([Section 3.5.2](#), Item 4).

4.4 Posting your Paper to sasCommunity.org

An optional step to increase interest in your paper and to facilitate interaction with attendees is to start a page for your paper on sasCommunity.org (a collaborative online community for SAS® users worldwide). You can upload content such as: final paper, sample data, programs, presentation, and links to related papers. Instructions are available at the following link:

http://www.sascommunity.org/wiki/Create_an_Article_for_your_SAS_Global_Forum_Presentation

5. Presentation Details

5.1 Room Setup Details

Each meeting room at the conference will include an LCD projector and a microphone. If you have any additional needs please tell your Section Chair as soon as possible. The presentation you upload to the Abstract Submission Website will be preloaded on the laptops available in each room.

5.2 Slide Counts

Contributed papers can be 20 or 50 minutes in length. A good rule of thumb is that a slide will take 1-2 minutes to present, so if you leave time for questions (usually about 5 minutes), a twenty-minute paper should be about 10-12 slides, and a 50-minute paper should be about 30-35 slides.

5.3 Tips for Preparing your Presentation

1. A presentation template is available for downloading from the MWSUG website.
2. Scale your visuals for presentation in a large conference room that seats 50-150 people. Generally this means that font sizes should be no smaller than 24 points. One way to simulate how your slides will appear to the people who are sitting in the back of the room is to step back about 12 feet from a 12-inch laptop display or about 15 feet from a 14-15 inch monitor on which your slides are displayed.
3. If you are using slides, prepare notes that compliment your slides – do not read what is shown on the slides. The audience can read faster than you can read them aloud.
4. The opening should be concise and your purpose clearly stated; get the attention of your audience.
5. Use a closing slide to summarize your main points.
6. Wherever possible, use screen captures rather than trying to do a live demo.
7. Use a mixture of slides that show text, flow charts, and output. Images such as screen captures can be used to show a product's application in the workplace.
8. Divide ideas into groups of three to five, so your audience can more easily grasp information.
9. When using graphics, mute the colors for readability.
10. Limit the text in your visuals to the main concepts.
11. Post supplemental information such as source code, macros, and printouts online. Refer to Posting your Paper to sasCommunity.org ([Section 4.4](#)).
12. Receive electronic comments and questions in real time by including the hashtags #MWSUG2017 and #XXnn for your paper in the bottom right hand corner of your slides, where "SS" is the two character section abbreviation and "nn" is the two digit number assigned to your paper.

5.4 Presentation Examples

Refer to the MWSUG presentation template on the MWSUG 2017 website.

5.5 Practicing your Presentation Tips

1. Practice your presentation aloud, speaking slowly and clearly. Remember that how you say it is just as important as what you say.
2. Ask others to listen and give you feedback about the volume, clarity, and speed of your presentation.

3. Do not read your paper or slides. Use an outline of your major concepts to follow when making your presentation.
4. Use simple English to help your audience grasp your message more easily. This is an international audience; for many attendees, English may be a second language.
5. Conclude your presentation by repeating your opening theme and main ideas. Answer any questions that you might have raised in your opening, and repeat the main point of your presentation.
6. Practice the timing your presentation, staying within the time allotted.
7. "SAS" rhymes with "glass", "pass", "mass". Please do not refer to SAS products or to the company as "S" "A" "S" that is, pronouncing each letter. "SAS" is one syllable and is no longer considered an acronym.

5.6 Presentation Requirements

1. Use SAS trademarks correctly in your slides. A list showing the proper names and trademarks is available at: <http://www.sas.com/presscenter/trademarklist.html>.
2. Presentation file should be PowerPoint 97-2003, 2007, 2010 or 2013. If created using Adobe PDF, it must have the capability of Full Screen Mode display similar to the PowerPoint display (i.e., same ratio).

5.7 Delivering your Presentation

1. Note the time and room location of your presentation.
2. Arrive at the correct location at least one presentation before yours.
3. Let the Section Chair and the Session Coordinator know you are there. The Session Coordinator will help you operate the projector and take care of the lighting.
4. Your title and biography slide will be displayed on the screen prior to your presentation.
5. Be sure that everything that you need is in place and working.
6. Stand at the podium if possible. This gives the audience a clear view of both the screen and you.
7. Be aware of the time. The Session Coordinator will help you via flash cards that will show how much time remains. The Session Coordinator will stop your presentation when the allotted time is used. You will not be allowed to continue beyond your allotted time.
8. Do not turn around to read your slides to the audience; it hinders the ability of the audience to hear you.
9. When your presentation is finished, thank your audience for their attention and ask if there are any questions while you are still at the podium.
10. Allow about 5 minutes of your allotted time for the audience to ask questions. It's very common for speakers to get questions; you should consider it a compliment that your listeners want to learn more about your ideas.
 - a. Repeat each question. This verifies what the question is, and it also gives you a few seconds to prepare an answer.
 - b. If you do not know the answer, say so, and offer to get the answer to the question after the presentation.
11. If possible, stay at the back of the room a few minutes after your presentation to be accessible for more questions and to get contact information from people you promised to reply to.
12. Be courteous of the next presenter and if any conversations or questions continue when the next

presentation starts, continue the conversation outside the presentation room so as to not disturb the presenter or audience.

6. Electronic Poster Details

Electronic posters (e-Posters) are similar to traditional poster presentations but are presented on a large monitor. The e-Poster should be designed so that the topic covered is clear and concise.

6.1 e-Poster Guidelines

1. Use PowerPoint to create your e-Poster. You can save yourself much work by using the template provided. If you choose to not use the template, please ensure your e-Poster conforms to the following requirements:
 - a. 16:9 ratio
 - b. Landscape orientation
 - c. Professional font such as Arial, Times New Roman, Calibri
 - d. Font size should be large enough to read from a few feet away. Ideally 28 pt or larger but no smaller than 18 pt.
 - e. File size should be 100 MB or less
 - f. One slide
 - g. Title and author(s) included at the top
2. No aspect of the e-Poster should be dependent on the internet. It should be self-containing.
3. Any formulas in the e-Poster should be embedded as images and not as actual formulas. This will allow the formulas to display consistently across different platforms.
4. Any animations included will need to work on a timer instead of a mouse click; refer to Kiosk Mode for more information ([Section 6.4](#))
5. If the submitted e-Posters is not the correct size, as outlined above, then it will be forced to the correct size, which may cause distortion.

6.2 e-Poster Tips

1. Before you start preparing your e-Poster, ask yourself the following:
 - a. What is the main goal of the e-Poster?
 - b. What do you want your audience to take away?
 - c. What would you like someone who is passing by your e-Poster to do?
 - i. Do you want them to stop? If so, give a catchy title to draw them in.
 - ii. Do you want them to reach out to you and engage in a discussion? If so, make your e-Poster about a topic that is of interest but may not be widely used, a 'Hot Topic' that is getting lots of attention or an existing concept that is used in a novel way.
2. An e-Poster is like an outline, not a novel. Keep the information on the e-Poster simple and easy to follow. Remember that you will not always be there to explain it.
3. Graphs, column charts, box plots, drawings, and other artwork are effective poster enhancements.
4. For helpful tips on creating a poster, refer to the following websites:
<http://www.swarthmore.edu/NatSci/cpurrin1/posteradvice.htm>
<https://luponvochs.files.wordpress.com/2008/10/how-to-design-an-electronic-poster.pdf>

6.3 e-Poster Requirements

1. Use SAS trademarks correctly in your slide. A list showing the proper names and trademarks is available at: <http://www.sas.com/presscenter/trademarklist.html>.
2. File should be PowerPoint 97-2003, 2007, 2010 or 2013. If created using Adobe PDF, then it needs to have the capability of Full Screen Mode display similar to the PowerPoint display (i.e., same ratio).

6.4 Kiosk Mode

The e-Posters will be done in Kiosk Mode. This means that all the e-Posters submitted will be combined into one master file with a menu and navigation buttons. Each e-Poster will only be accessible from the main menu. In Kiosk Mode, the 'click to advance' feature will be disabled and replaced with navigation buttons. Since the 'click to advance' feature will be disabled, any animations that work on a mouse-click will not function.

6.5 Final e-Poster Submission

Final e-Posters must be uploaded to the Abstract Submission Website listed in [Section 1.4](#) by the deadline indicated in the list of important conference dates found in [Section 1.1](#).